

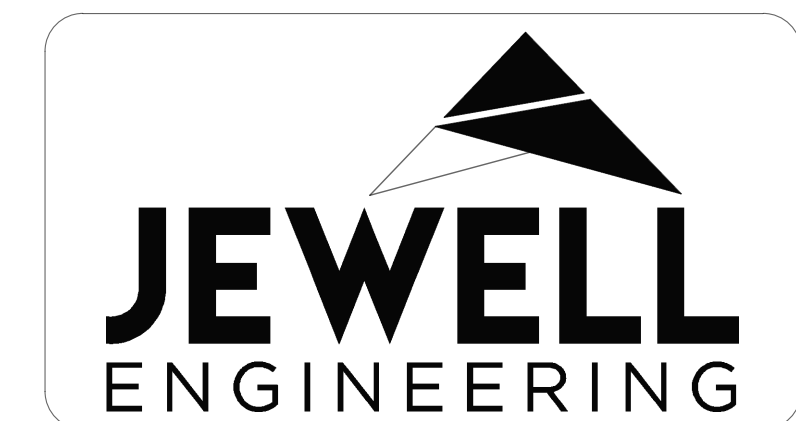
PROPOSED APARTMENT BUILDINGS

276 Victoria Street North
Port Hope, Ontario

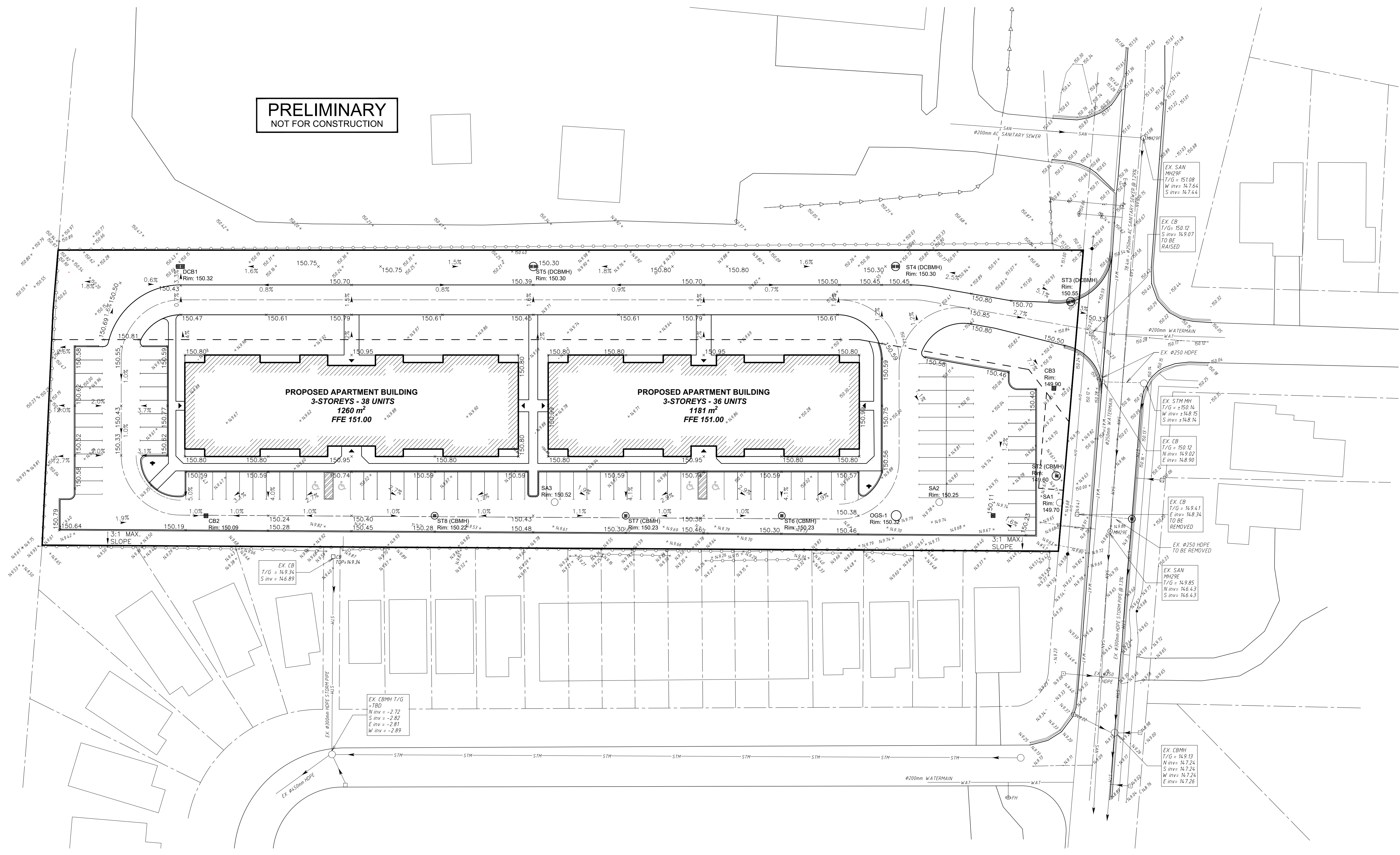


DRAWING LIST

- EC-1 EXISTING CONDITIONS & REMOVALS
EROSION & SEDIMENT CONTROL
- GG-1 GENERAL GRADING PLAN
- GS-1 GENERAL SERVICING PLAN
- SAN-1 SANITARY CATCHMENT AREAS
- CA-1 PRE-DEVELOPMENT
STORMWATER CATCHMENT AREAS
- CA-2 POST-DEVELOPMENT
STORMWATER CATCHMENT AREAS



PRELIMINARY
NOT FOR CONSTRUCTION



GENERAL NOTES

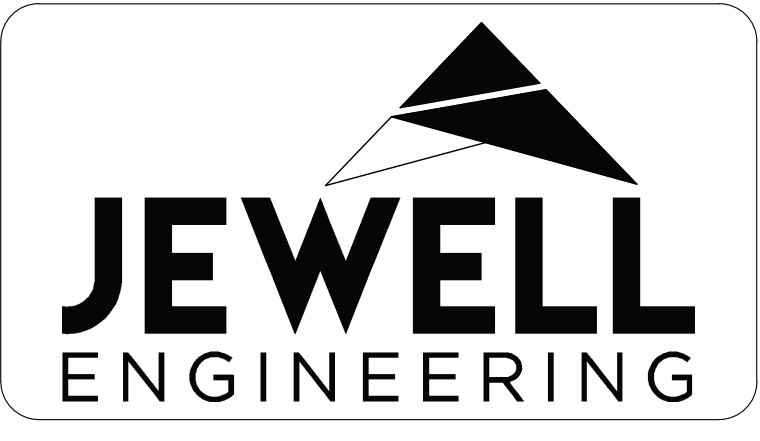
- ALL INFORMATION TO BE VERIFIED ON SITE PRIOR TO COMMENCING ANY WORK. DISCREPANCIES ARE TO BE REPORTED TO THE CONSULTANT IMMEDIATELY.
- ALL UTILITY LOCATIONS SHOWN ON THE DRAWINGS ARE APPROXIMATE. THE CONTRACTOR SHALL CONFIRM LOCATIONS ON SITE AND ASSUME ALL LIABILITY FOR DAMAGE TO ALL UTILITIES.
- EXCLUDING THE BENCHMARK AND DESCRIPTION PROVIDED FOR THIS PROJECT, NO OTHER ELEVATIONS ARE TO BE USED AS A REFERENCE ELEVATION FOR ANY PURPOSE.
- ALL DIMENSIONS SHOWN ARE IN METRES OR MILLIMETRES, UNLESS OTHERWISE NOTED.

GEOMETRIC NOTE

- ALL SURVEY DATA SHOWN ON THIS DRAWING WAS RECORDED USING REAL TIME KINETIC (RTK) GPS OBSERVATIONS IN REFERENCE TO UTM 18 NORTH COORDINATE SYSTEM.
- ALL ELEVATIONS ARE IN REFERENCE TO LOCAL DATUM NAD83 - GEODETIC MODEL HT2_0 UNLESS DESCRIBED OTHERWISE.
- ** DRAWINGS ARE NOT TO BE SCALED **

REVISIONS			
NO.	DATE	DESCRIPTION	BY
1	06NOV23	ISSUED FOR RE-ZONING	JO
2	17JUL23	DRIVEWAY AND SERVICES REVISED	JO
3	22JUL24	STORM SEWER MODIFIED	JO

LEGEND	
• 16.5	EXISTING GRADE (Elev. in m)
× 103.5	PROPOSED GRADE
× (103.5)	BOTTOM OF SWALE ELEVATION
→	DIRECTION OF EXISTING RUN-OFF
→	DIRECTION OF PROPOSED RUN-OFF
—○—○—	FENCE
—	TOP OF BANK
—	BOTTOM OF SWALE
WAT	EXISTING WATERMAIN
—○—	VALVE
—○—	HYDRANT
SAN	EXISTING SANITARY SEWER
—○—	MAINTENANCE HOLE
STM	EXISTING STORM SEWER
□	CATCH BASIN
GAS	GAS SERVICE
—○—	OVERHEAD UTILITY
—○—	UNDERGROUND UTILITY
•	UTILITY POLE

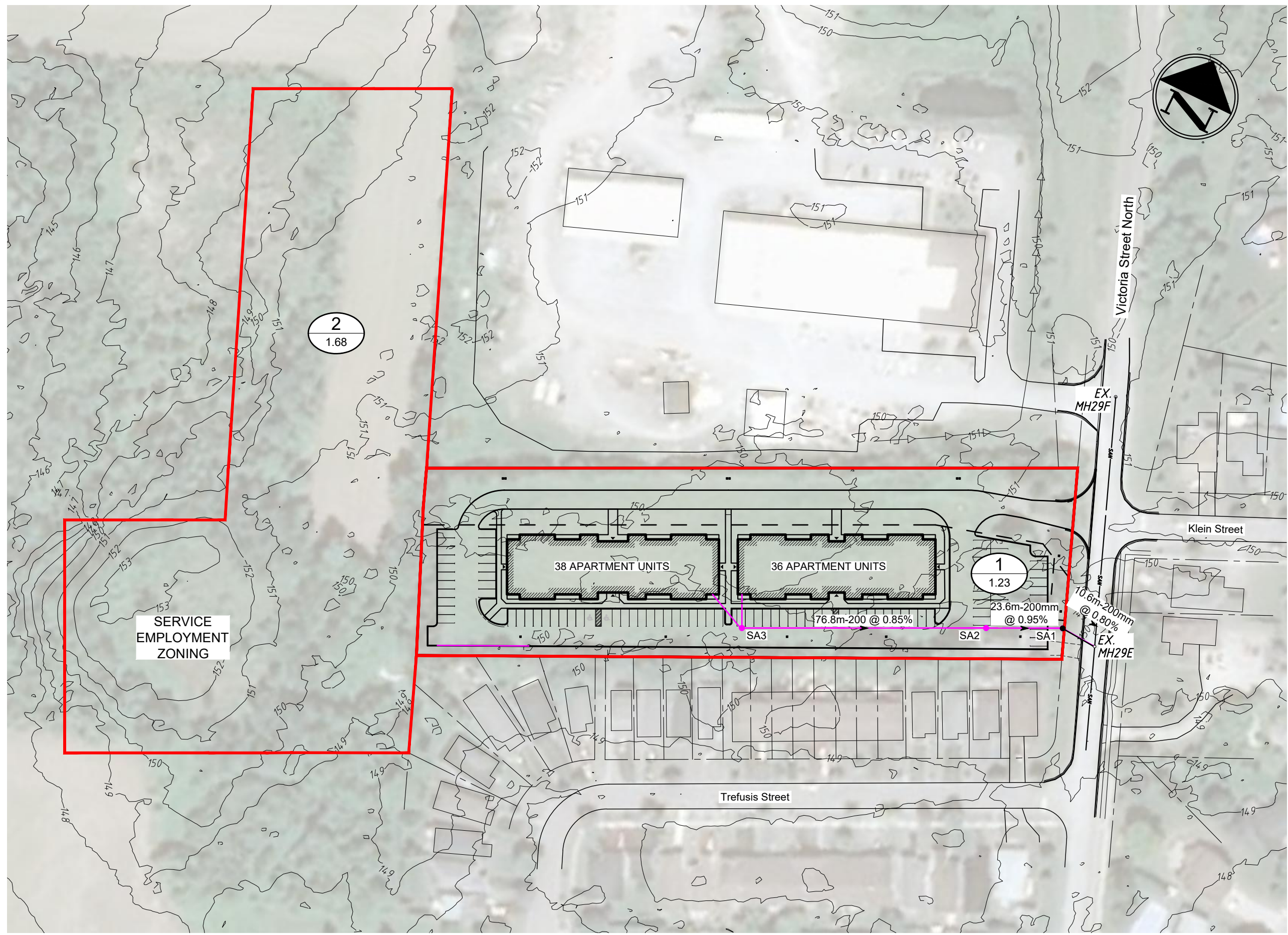


PROPOSED
APARTMENT BUILDINGS

276 VICTORIA STREET NORTH
PORT HOPE, ONTARIO

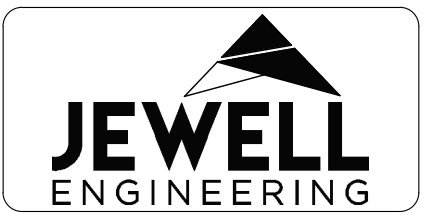
GENERAL GRADING PLAN

DRAWN BY: JO	PROJECT NO: 220-5186
DESIGNED BY: JO	DATE: 16 July 2024
CHECKED BY: BK	SCALE: 1:400
APPROVED BY: BK	CONTRACT NO: DRAWING NO: GG-1



REVISIONS			
No.	DATE	DESCRIPTION	BY
1	17JUL24	GENERAL REVISIONS	JO

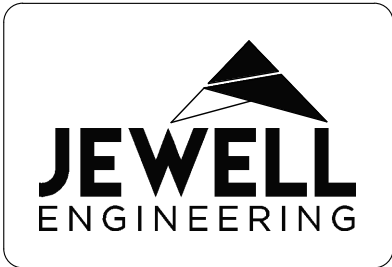
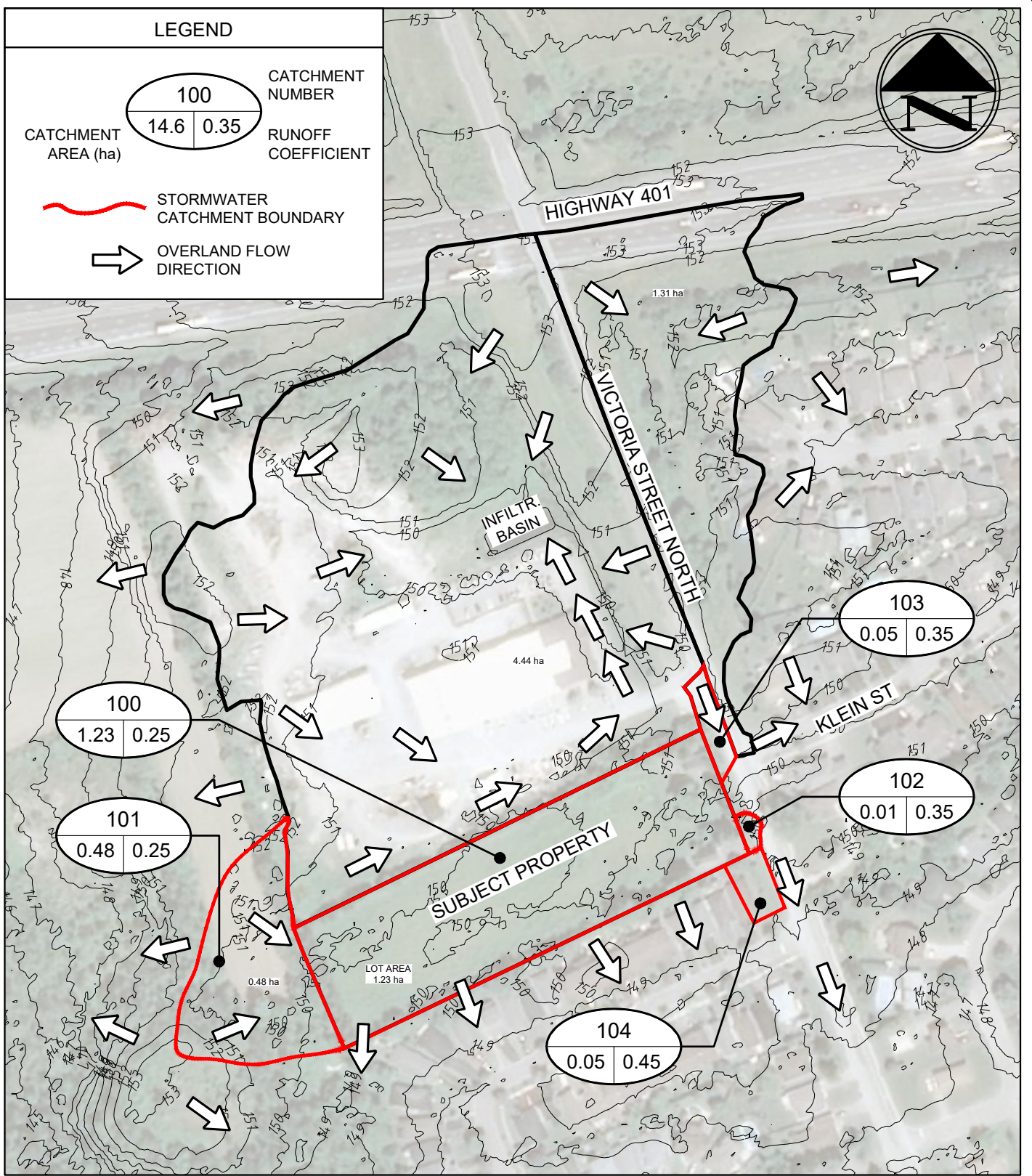
LEGEND	
	CATCHMENT NUMBER CATCHMENT AREA (ha)
	SANITARY CATCHMENT BOUNDARY



PROPOSED APARTMENT BUILDINGS
276 Victoria Street North
Port Hope, Ontario

SANITARY CATCHMENT AREAS

DRAWN BY JO	PROJECT NO 220-5186
DESIGNED PP	DATE 22 July 2024
CHECKED BK	SCALE 1:1200
	DRAWING NO SAN-1



PROPOSED APARTMENT BUILDINGS
 276 Victoria Street North
 Port Hope, Ontario

PRE-DEVELOPMENT STORMWATER CATCHMENT AREAS

REVISIONS

NO.	DATE	DESCRIPTION	BY

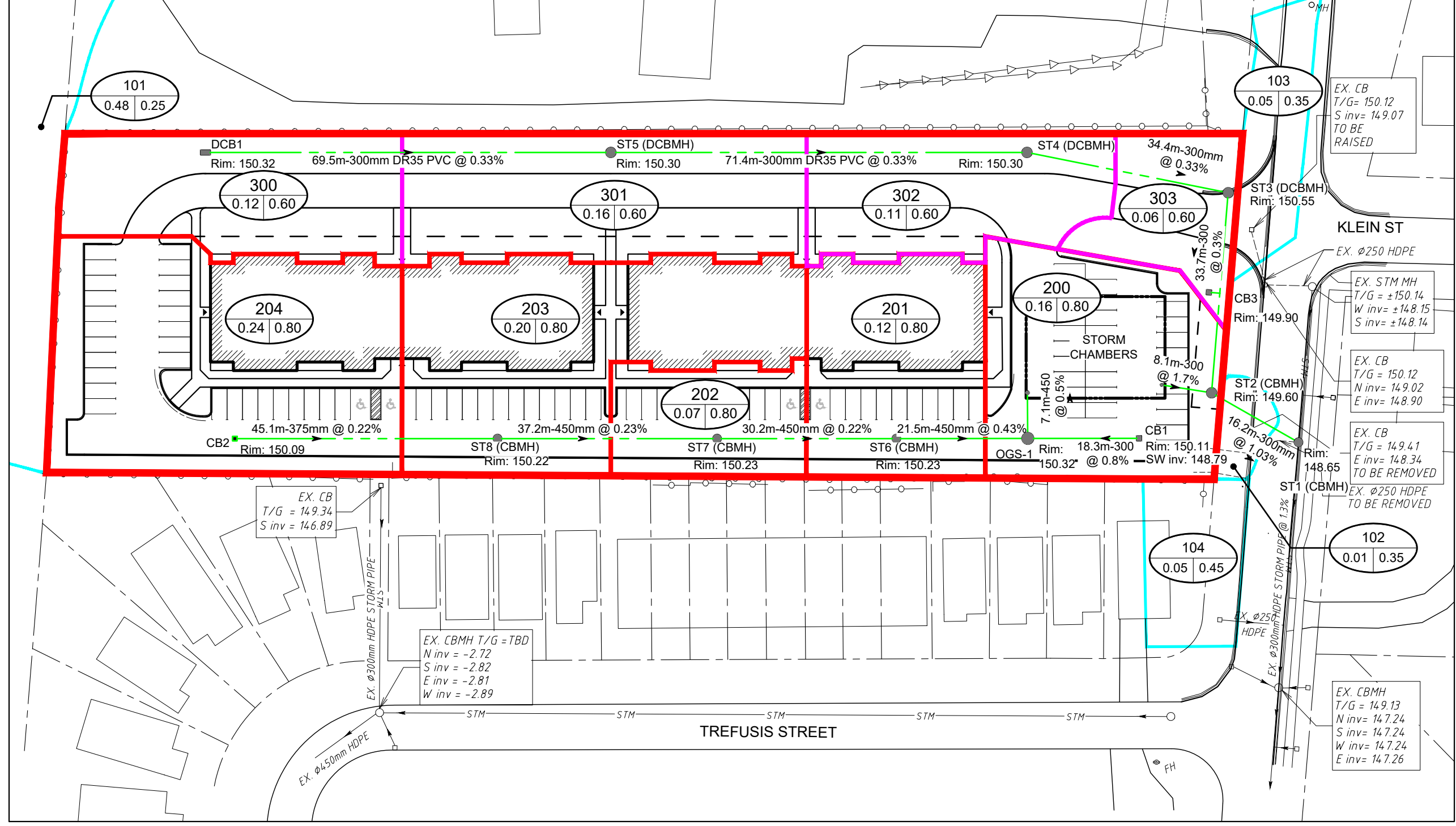
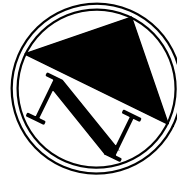
DRAWN BY:	PROJECT NO:	
JO	220-5186	
DESIGNED BY:	DATE:	
BK	22 July 2024	
CHECKED BY:	SCALE:	DRAWING NO.:
BK	1:2500	CA-1

LEGEND

CATCHMENT AREA (ha) **100** | **14.6** | **0.35** | CATCHMENT NUMBER | RUNOFF COEFFICIENT

STORMWATER CATCHMENT BOUNDARY

OVERLAND FLOW DIRECTION



REVISIONS

No.	DATE	DESCRIPTION	BY

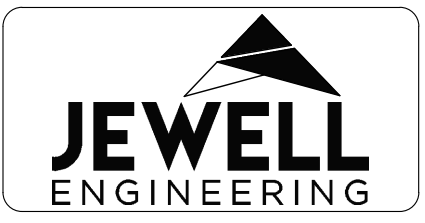
EX. CB
T/G = 150.12
S inv = 149.07
TO BE RAISED

EX. STM MH
T/G = ±150.14
W inv = ±148.15
S inv = ±148.14

EX. CB
T/G = 150.12
N inv = 149.02
E inv = 148.90

EX. CB
T/G = 149.41
E inv = 148.34
TO BE REMOVED

EX. CBMH
T/G = 149.13
N inv = 147.24
S inv = 147.24
W inv = 147.24
E inv = 147.26



PROPOSED APARTMENT BUILDINGS

276 Victoria Street North
Port Hope, Ontario

POST-DEVELOPMENT STORMWATER CATCHMENT AREAS

DRAWN BY	PROJECT NO	
JO	220-5186	
DESIGNED	DATE	
PP	22 July 2024	
CHECKED	SCALE	DRAWING NO
BK	1:750	CA-2