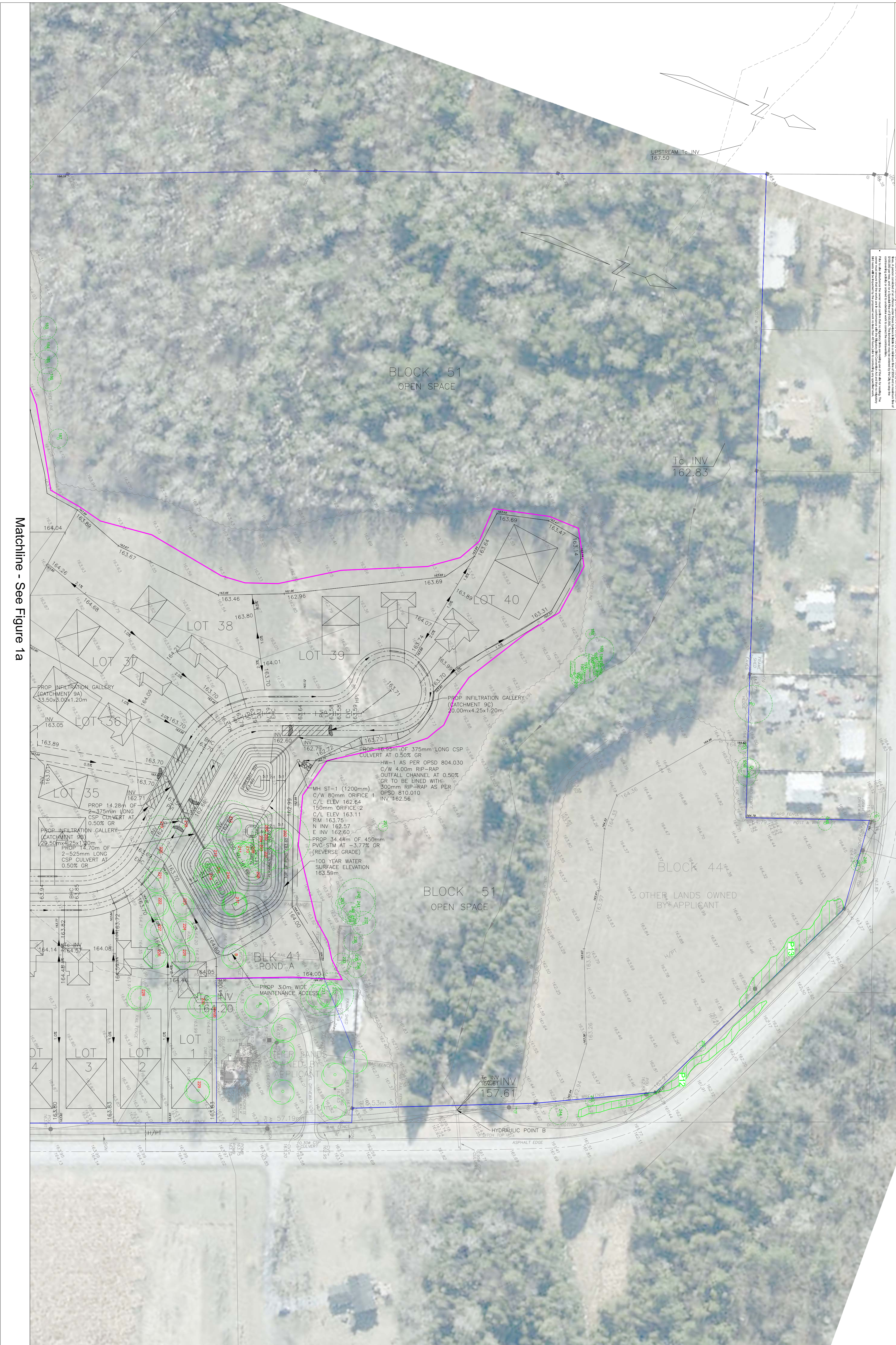


TREE PROTECTION ZONE (TPZ)
 The Tree Protection Zone (TPZ) is defined as the area surrounding a tree, or group of trees, which is to be protected from damage or removal. The TPZ is determined by the species, size, and health of the tree, and is typically a minimum of 10m DBH on and within six metres of the disturbance area. The TPZ is to be maintained throughout the life of the project, and any trees within the TPZ are to be preserved, unless otherwise specified in the Tree Protection Plan Notes for preservation details.

TREE PROTECTION BUFFER (TPB)
 The Tree Protection Buffer (TPB) is defined as the area surrounding the TPZ, which is to be protected from damage or removal. The TPB is typically a minimum of 10m DBH on and within six metres of the disturbance area. The TPB is to be maintained throughout the life of the project, and any trees within the TPB are to be preserved, unless otherwise specified in the Tree Protection Plan Notes for preservation details.

TREE PROTECTION AREA (TPA)
 The Tree Protection Area (TPA) is defined as the area surrounding the TPB, which is to be protected from damage or removal. The TPA is typically a minimum of 10m DBH on and within six metres of the disturbance area. The TPA is to be maintained throughout the life of the project, and any trees within the TPA are to be preserved, unless otherwise specified in the Tree Protection Plan Notes for preservation details.



Matchline - See Figure 1a

LEGEND

- Tree location, determined by GPS
- Tree Label (RED) removal required
- Tree Label (GREEN) preservation recommended
- Required Tree Protection Fencing
- Ditchline
- Limit of Polygon (Groups of Trees)
- Polygon (Groups of Trees) Label (RED), polygon or portion of polygon to be removed
- Polygon (Groups of Trees) Label (GREEN), polygon or portion of polygon to be preserved
- Extent of polygon (group of trees) to be removed
- Extent of polygon (group of trees) to be preserved

No.	Issue/Revisions	Date	By
1	Report Submission	28 Mar, 2023	CB
2	Report Revisions	7 Nov, 2023	CB
3	Report Revisions	2 Apr, 2024	NS

Base Data: BIV Surveyors (top), D.C. Baska & Associates Ltd. (Site plan), Northumberland County Mapping (roads)

KUNTZ FORESTRY CONSULTING INC.
 148 Lakeshore Road West
 PO Box 7387 Lakeshore W1O
 Ontario, Canada L4K 1B5
 Phone: 905-882-1411
 e-mail: info@kuntzforestry.ca
 web: www.kuntzforestry.ca

Client
Hillstreet Developments Ltd.
 524 Rosebank Road
 Pickering, ON L1W 2W5

Property
5868 County Road 65
 Port Hope, Ontario

Tree Inventory & Preservation Plan (north)

Project P3660
 Date 28 March 2023
 Scale 1:750

Figure **1b**