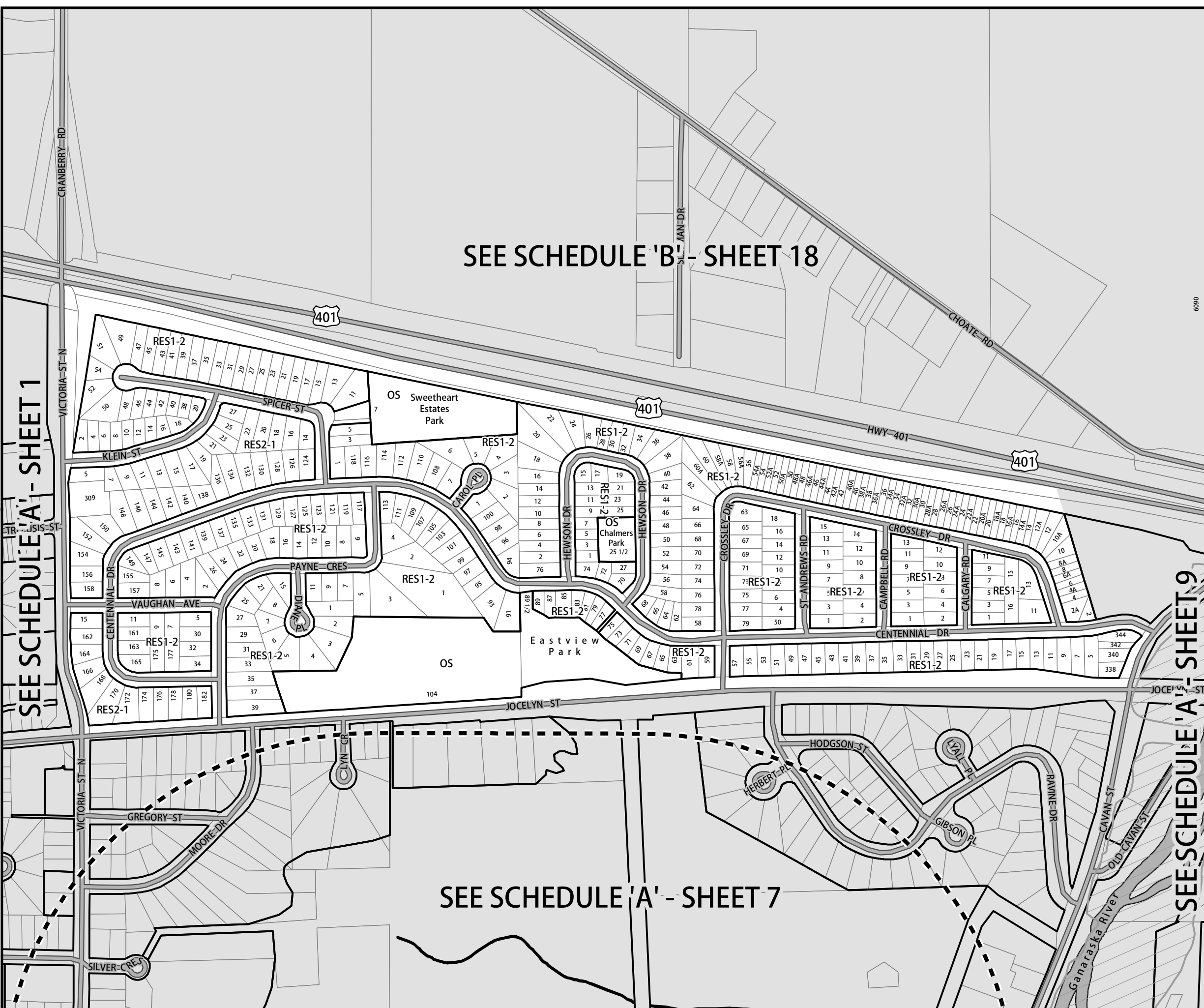


SCHEDULE 'A' - SHEET 8 ZONING BY-LAW 20/2010

Adopted: June 29, 2010
Printed: December, 18, 2018

SEE SCHEDULE 'B' - SHEET 18



SEE SCHEDULE 'A' - SHEET 1

SEE SCHEDULE 'A' - SHEET 9

SEE SCHEDULE 'A' - SHEET 7

RESIDENTIAL

- RES1 - LOW DENSITY RESIDENTIAL ONE
- RES2 - LOW DENSITY RESIDENTIAL TWO
- RES3 - MEDIUM DENSITY RESIDENTIAL
- RES4 - HIGH DENSITY RESIDENTIAL
- RESV1 - HAMLET RESIDENTIAL ONE
- RESV2 - HAMLET RESIDENTIAL TWO
- RESR - RURAL RESIDENTIAL
- RESE - ESTATE RESIDENTIAL

COMMERCIAL

- COM1 - NEIGHBOURHOOD COMMERCIAL
- COM2 - GENERAL COMMERCIAL
- COM3 - DOWNTOWN COMMERCIAL
- COMR - RURAL COMMERCIAL
- COMV - HAMLET COMMERCIAL

COUNTRYSIDE

- A - AGRICULTURAL
- RU - RURAL
- ORM-EP - OAK RIDGES MORAINÉ - ENVIRONMENTAL PROTECTION
- ORM-C - OAK RIDGES MORAINÉ - CORE
- ORM-L - OAK RIDGES MORAINÉ - LINKAGE
- ORM-RU - OAK RIDGES MORAINÉ - RURAL
- ORM-MX - OAK RIDGES MORAINÉ - EXTRACTIVE INDUSTRIAL
- ORM-V - OAK RIDGES MORAINÉ - VILLAGE

EXCEPTIONS

- (#) - Site Specific Exception (See Part 12)

EMPLOYMENT

- EMP1 - GENERAL EMPLOYMENT
- EMP2 - SERVICE EMPLOYMENT
- EMPR - RURAL EMPLOYMENT
- EMPX - EXTRACTIVE
- EMPW - WASTE MANAGEMENT AREA
- EMPG - POWER GENERATION

OTHERS

- IU - URBAN INSTITUTIONAL
- IR - RURAL INSTITUTIONAL
- OS - OPEN SPACE
- OSR - MAJOR RECREATIONAL
- EP-F - ENVIRONMENTAL PROTECTION - FLOOD PLAIN (OVERLAY SEE SECTION 11.1)
- EP - ENVIRONMENTAL PROTECTION - DEVELOPMENT
- D - DEVELOPMENT
- DW - DEVELOPMENT WATERFRONT
- T - TRANSPORTATION
- T# - TEMPORARY USE PERMISSION (SEE PART 14 OF BY-LAW)

HOLDING PROVISIONS (SEE PART 13)

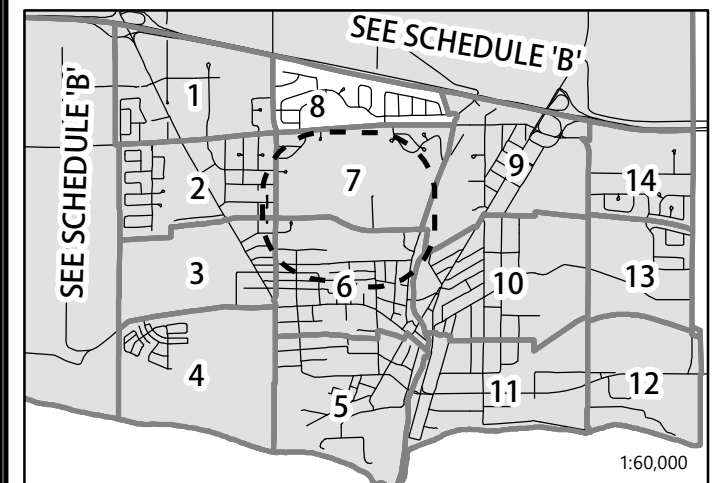
- (H1) - Development Site
- (H2) - Waste Disposal Assessment Area
- (H3) - LLRWM Evaluation Area
- (H4) - Oak Ridges Moraine Environmental Review
- (H5) - Oak Ridges Moraine New Dwellings
- (H6) - Factory Outlet Mall Site

NOTE:
1) Waterbodies illustrated on this map are considered to be Environmental Protection with exact boundaries subject to confirmation.

LEGEND

- EP-F - Environmental Protection
- Flood Plain (Overlay See Section 11.1)
- Waste Disposal Assessment Area - Applies to (H2)
- Parcel Fabric
- Waterbody (See Note 1)
- Road
- Railway
- Transcanada Pipeline - See Section 4.36.4
- Trans-Northern Pipeline - See Section 4.36.5
- Hydro Corridor

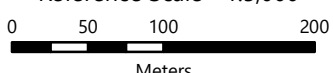
KEY MAP



The Municipality of
Port Hope



Reference Scale - 1:5,000



The information contained on this map was carefully prepared & checked for accuracy and correctness. However the information is supplied without expressed or implied warranty of any kind, including any warranty of fitness for a particular purpose. In no event will the Municipality of Port Hope be liable for any damages whether incidental, consequential or direct in conjunction with, or arising from the furnishing or use of this information. Copyright: Queens Printer 2017.