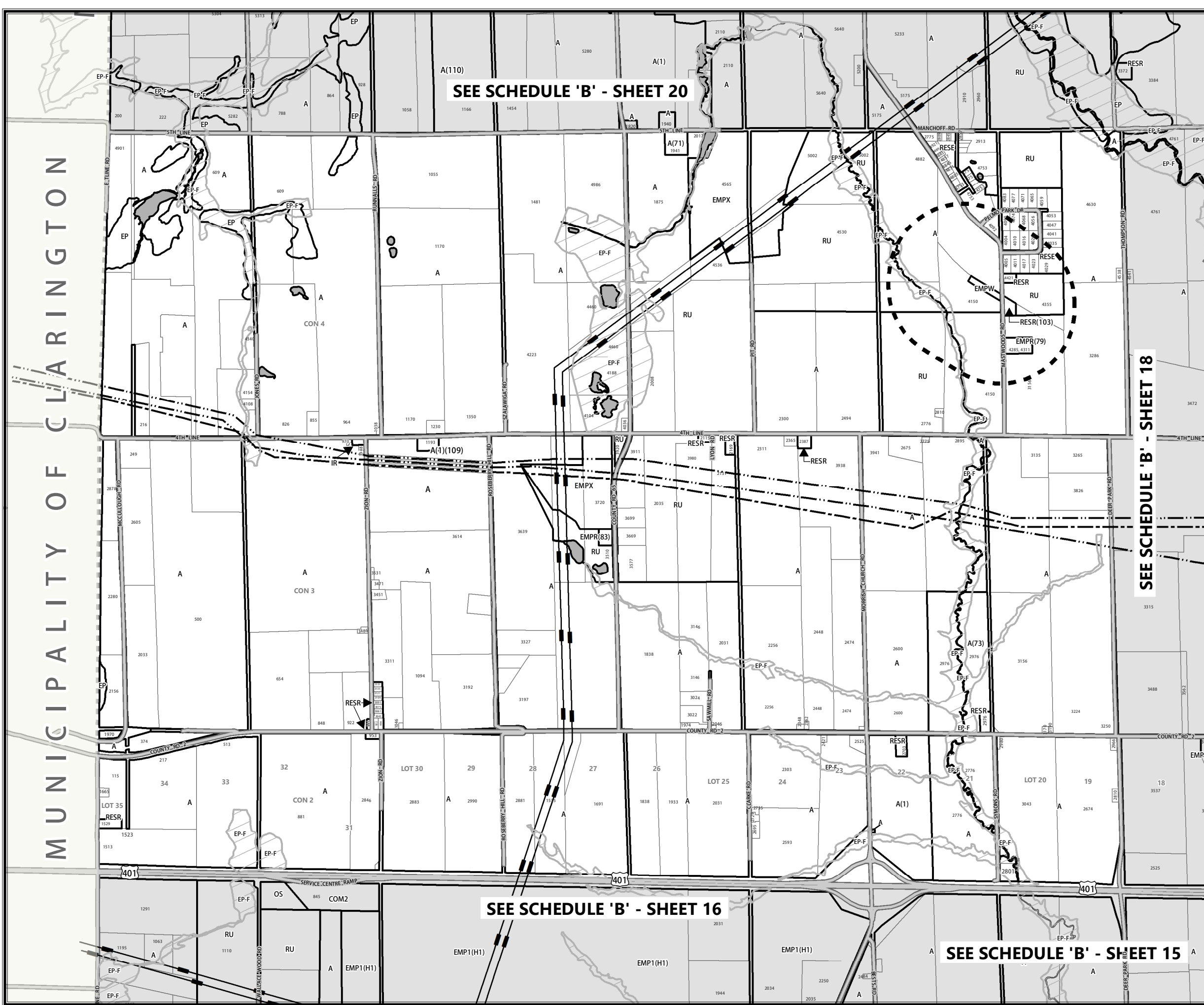


# SCHEDULE 'B' - SHEET 17 ZONING BY-LAW 20/2010

Adopted: June 29, 2010  
Printed: December 19, 2018



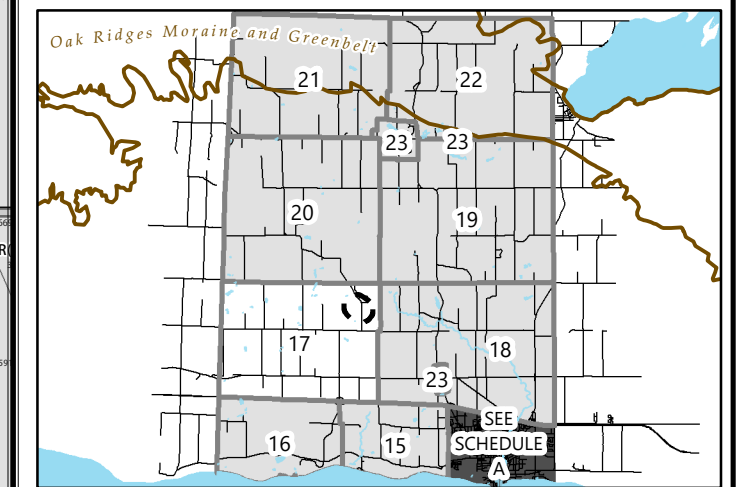
SEE SCHEDULE 'B' - SHEET 20

SEE SCHEDULE 'B' - SHEET 18

SEE SCHEDULE 'B' - SHEET 16

SEE SCHEDULE 'B' - SHEET 15

- RESIDENTIAL**  
 RES1 - LOW DENSITY RESIDENTIAL ONE  
 RES2 - LOW DENSITY RESIDENTIAL TWO  
 RES3 - MEDIUM DENSITY RESIDENTIAL  
 RES4 - HIGH DENSITY RESIDENTIAL  
 RESV1 - HAMLET RESIDENTIAL ONE  
 RESV2 - HAMLET RESIDENTIAL TWO  
 RESR - RURAL RESIDENTIAL  
 RESE - ESTATE RESIDENTIAL
- COMMERCIAL**  
 COM1 - NEIGHBOURHOOD COMMERCIAL  
 COM2 - GENERAL COMMERCIAL  
 COM3 - DOWNTOWN COMMERCIAL  
 COMR - RURAL COMMERCIAL  
 COMV - HAMLET COMMERCIAL
- COUNTRYSIDE**  
 A - AGRICULTURAL  
 RU - RURAL  
 ORM-EP - OAK RIDGES MORaine - ENVIRONMENTAL PROTECTION  
 ORM-C - OAK RIDGES MORaine - CORE  
 ORM-L - OAK RIDGES MORaine - LINKAGE  
 ORM-RU - OAK RIDGES MORaine - RURAL  
 ORM-MX - OAK RIDGES MORaine - EXTRACTIVE INDUSTRIAL  
 ORM-V - OAK RIDGES MORaine - VILLAGE
- EMPLOYMENT**  
 EMP1 - GENERAL EMPLOYMENT  
 EMP2 - SERVICE EMPLOYMENT  
 EMPR - RURAL EMPLOYMENT  
 EMPX - EXTRACTIVE  
 EMPW - WASTE MANAGEMENT AREA  
 EMPG - POWER GENERATION
- OTHERS**  
 IU - URBAN INSTITUTIONAL  
 IR - RURAL INSTITUTIONAL  
 OS - OPEN SPACE  
 OSR - MAJOR RECREATIONAL  
 EP-F - ENVIRONMENTAL PROTECTION - FLOOD PLAIN (OVERLAY SEE SECTION 11.1)  
 EP - ENVIRONMENTAL PROTECTION  
 D - DEVELOPMENT  
 T - TRANSPORTATION  
 T# - TEMPORARY USE PERMISSION (SEE PART 14 OF BY-LAW)
- HOLDING PROVISIONS (SEE PART 13)**  
 (H1) - Development Site  
 (H2) - Waste Disposal Assessment Area  
 (H3) - LLRWM Evaluation Area  
 (H4) - Oak Ridges Moraine Environmental Review  
 (H5) - Oak Ridges Moraine New Dwellings  
 (H6) - Factory Outlet Mall Site
- EXCEPTIONS**  
 (#) - Site Specific Exception (See Part 12)
- LEGEND**
- |  |   |  |  |
|--|---|--|--|
|  | EP-F Environmental Protection - Floodplain Overlay - See Section 11.1 |  | Roads  |
|  | Waste Disposal Assessment Area - Applies to (H2)                      |  | Railway                                      |
|  | LLRWM Evaluation Area - Applies to (H3)                               |  | Trans-Northern Pipeline - See Section 4.36.4 |
|  | Parcel Fabric   |  | TransCanada Pipeline - See Section 4.36.5    |
|  | Waterbody (See Note 1)  |  | Hydro Lines                                  |
- BASE MAPPING**



The Municipality of Port Hope

Reference Scale - 1:25,000

The information contained on this map was carefully prepared & checked for accuracy and correctness. However the information is supplied without expressed or implied warranty of any kind, including any warranty of fitness for a particular purpose. In No event will the Municipality of Port Hope be liable for any damages whether incidental, consequential or direct in conjunction with, or arising from the furnishing or use of this information. Copyright Queens Printer 2017.